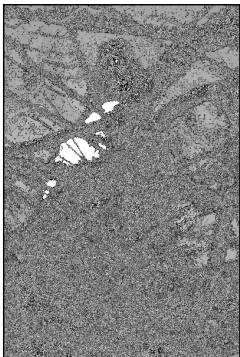


theDorset Birding and Wildlifeexperience



## Illustrated Wildlife Talks

[June 2010]



photos © N.Gartshore

## The Dorset Birding and Wildlife Experience

Neil Gartshore  
Moor Edge, 2 Bere Road, Wareham  
Dorset, BH20 4DD

01929 552560  
07986 434375

[www.dorsetbirdingandwildlife.co.uk](http://www.dorsetbirdingandwildlife.co.uk)  
[enquiries@dorsetbirdingandwildlife.co.uk](mailto:enquiries@dorsetbirdingandwildlife.co.uk)

**The talk:** My talks are designed to last a 'standard' meeting of two halves, each usually taking around 30-40 minutes to deliver. This should be taken as a guide only - I am able to adjust the talks to suit your requirements.

**Distance & Times:** I will normally travel within about a 100-mile radius of Wareham, in Dorset, but would consider travelling further a field. I am available to attend morning, afternoon or evening meetings and can take bookings well in advance to allow you to draw up your programme.

**Charges:** My charges for the talks depend on a number of variables so the cost of each talk will be individually advised. The price quoted will be inclusive of my travel and time. No deposit is required on confirmation of a booking but payment should be made on the day either by cash or a cheque made out to N. Gartshore.

As part of my 'charges' I would expect to bring along both publicity material to promote my guiding service and a small selection of books that I sell through my other business, Calluna Books.

**Equipment:** My current list of talks is a mixture of slide and power point presentations, both for which I have my own equipment. If possible though, I would prefer to use equipment available at the venue (especially a screen and a projector table). Equipment requirements will be discussed on confirmation of your booking.

**Short notice:** I am happy to stand in at short notice if one of your booked speakers pulls out (subject to being available).

**Confirmation:** When you confirm a booking please send me details of how to get to the venue (if I am unfamiliar with it). I will contact you a week or so before the talk to make sure that everything is okay.

### **01 Poole Harbour and its Birds [power point]**

Poole Harbour is the largest natural harbour in the UK and is one of the largest in the world. Its international importance is recognised by the designations afforded it. From the rivers Frome and Piddle to the open sea, the harbour and its adjacent shores has a variety of habitats including reed beds, salt marsh, heathland and grassland providing for a wide range of bird species (many of which reach internationally important numbers). Human activity in the Harbour can often be in conflict with this wildlife interest - this talk looks at some of these problems, the wildlife and the beauty of this outstanding area.

### **02 Japan - Birding in the Land of the Rising Sun [power point]**

Found in the Palearctic region, the same as the UK, Japan provides both familiar and unfamiliar species for the visiting UK bird watcher. Together with a very different culture, any trip to this country will be an experience. Married to a Japanese wife, Japan has been a destination on many occasions since 1994 to visit the in-laws. This talk is a compilation of these visits experiencing Japanese culture and the country's birdlife.

### **03 A Sub-Antarctic Experience - the Prince Edward Islands [slides]**

Between Antarctica and the African continent are the Prince Edward Islands, one of a number of Sub-Antarctic island groups found around the southern hemisphere. In 1986/1987, I was employed by the Percy Fitzpatrick Institute for African Ornithology, through the University of Cape Town, as a field research assistant on this South African possession to collect data on giant petrels, Sub-Antarctic skua and a variety of albatross species. This talk looks at the island's history, its wildlife and the work that I was involved with.

### **04 Wildlife Wanderings in South Africa [slides]**

My first experience of a 'big trip' abroad was to South Africa in 1984/85. South Africa is often described as a 'world in one country' with the game parks of Kwa-zulu/Natal & the Transvaal; the Cape coast; the Drakensberg mountains; the arid Karoo; and the unique Fynbos playing host to a wonderful variety of birds and mammals. South Africa is so much of an experience that I have revisited many times since 1984/85. This talk is a compilation of these trips to look at some of the country's landscapes, birds and mammals.

### **05 The Farne Islands - Northumberland's Seabird City [slides]**

A visit to a seabird colony is a wonderful experience for the bird watcher, particularly for the first time. The Farne Islands, owned by the National Trust, is one of the best seabird sites in the UK. With fourteen species of breeding seabirds and a further 150 species of birds recorded during the year there is always something to see. A large colony of grey seals breed on the islands from late-October through to early December and the islands have a historical interest dating back over 1500 years. This talk combines my experiences of four seasons working as a warden on the islands in the 1980's.

### **06 Birding the Soutpansberg-Limpopo region of South Africa [power point]**

One area of South Africa that I have been drawn back to on many occasions since my first visit in 1986 is where four frontiers meet. South Africa's Limpopo Province borders Botswana, Zimbabwe and Mozambique and includes the northern section of the world-renowned Kruger National Park. A 100km to the south of the country borders along the Limpopo River stretches the Soutpansberg (Salt Pan Mountain). This talk takes us on a journey through the area to look at its landscapes, birds and mammals.

### **07 Heathlands - their wildlife and management [power point]**

Lowland heath, dominated by *Calluna vulgaris*, is restricted to Western Europe and has long been a habitat in decline. The UK has lost three quarters of its heathland over the last 300 years and now holds just over 20% of the world's remaining heathland resource. This man-made habitat has developed a diversity of special flora & fauna and requires active management for its survival. This talk looks at (largely in a Dorset context) why heathlands are so special, their flora and fauna, the reasons for their decline and how they are managed today.

### **An Introduction to Bird Watching**

This course is designed for those who are new to bird watching or those who feel that they would like a little more advice. The course is made up of a variety of sessions looking at bird watching aids (i.e. binoculars and field guides); basic identification skills - what to look for; bird song; a closer look at individual species; and advice on where to go bird watching. The sessions are a mixture of short lectures and exercises - a course information sheet is available on request. The course can be run for interested groups with a minimum of eight, to a maximum of 18 participants.

### **Dorset Birding & Wildlife Guides**

I am able to offer a guiding service to individuals or groups visiting Dorset in search of birds and other natural history on half-day trips, day trips, weekends or longer breaks. See our website or contact us for further details.



### **Calluna Books**

Moor Edge · 2 Bere Road · Wareham · Dorset · BH20 4DD

01929 552560

[enquiries@callunabooks.co.uk](mailto:enquiries@callunabooks.co.uk)

[www.callunabooks.co.uk](http://www.callunabooks.co.uk)

*Specialists in out-of-print*  
**NATURAL HISTORY BOOKS**